

Original BMW Accessories.

Installation Instructions.



M Performance Tailgate Silencer System Retrofit Kit BMW X4 (F26)

Retrofit kit number

18 30 2 359 003 F26 tailgate silencer system

Installation time

The installation time is **approx. 3.0 hours**. This may vary depending on the condition of the vehicle and the equipment in it.

Important information

These installation instructions are primarily designed for use within the BMW dealership organisation and by authorised BMW service companies.

These installation instructions are intended for use by qualified specialist staff trained on BMW vehicles with the relevant expert knowledge.

All work must be completed using the latest BMW repair manuals, wiring diagrams, servicing manuals and work instructions, in a rational order, using the prescribed tools (special tools) and observing current health and safety regulations.

If you experience installation or function problems, restrict troubleshooting to approx. 0.5 hours for mechanical work and 1.0 hour for electrical work.

To avoid unnecessary extra work and/or costs, send an inquiry straight away to the technical parts support team via the Aftersales Assistance Portal (ASAP).

Quote the following information:

- Chassis number,
- Retrofit kit part number,
- A detailed description of the problem,
- And any work already carried out.

Do not archive the hard copy of these installation instructions since daily updates are provided via ASAP!

Pictograms



Denotes instructions that draw your attention to dangers.



Denotes instructions that draw your attention to special features.



Denotes the end of the instruction or other text.

Installation information

Ensure that the cables and/or lines are not kinked or damaged as you install them in the car. Costs arising from this will not be reimbursed by BMW AG.

Additional cables/wires that you install must be secured with cable ties. If the specified PIN chambers are occupied, bridges, double crimps or twin-lead terminals must be used.

All pictures show LHD cars; proceed accordingly on RHD cars.

Check that all the parts fit accurately on the car before fitting them.

Some of the installation steps are shown only on one side of the car. Proceed in the same way on the other side of the car.

All affected components must be at room temperature when they are being installed.

The car may be driven after **approx. 24 hours** and may be taken through a car wash after **approx. 48 hours**.

Ordering instructions

For installation, Betalink must also be ordered (for instructions and part numbers, see EPC).

Workshop certificate

Print out the workshop certificate at the end of the installation instructions, fill it in and give it to the customer.



The vehicle type approval becomes invalid if used on public roads! ◀

Radio remote control

Tailgate silencer remote control **K** must be given to the customer along with its packaging and its function explained.

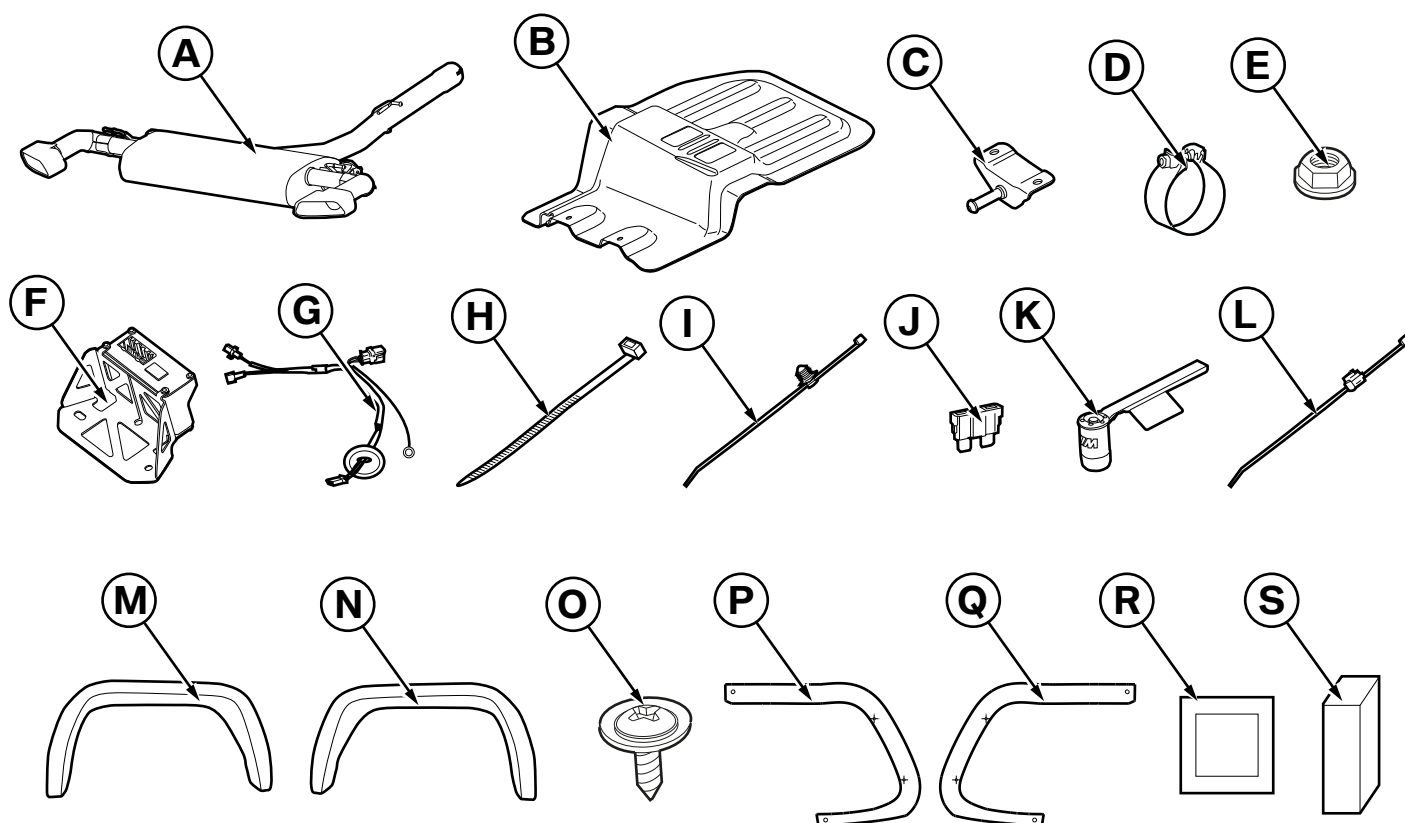
Special tools required

17 2 051, no information

Table of contents

Section	Page
1. Tailgate silencer system parts list	4
2. Preparatory work	5
3. Installing the tailgate silencer system	6
4. Concluding work and coding	12
5. Workshop certificate	13

1. Tailgate silencer system parts list



F26 0028 V

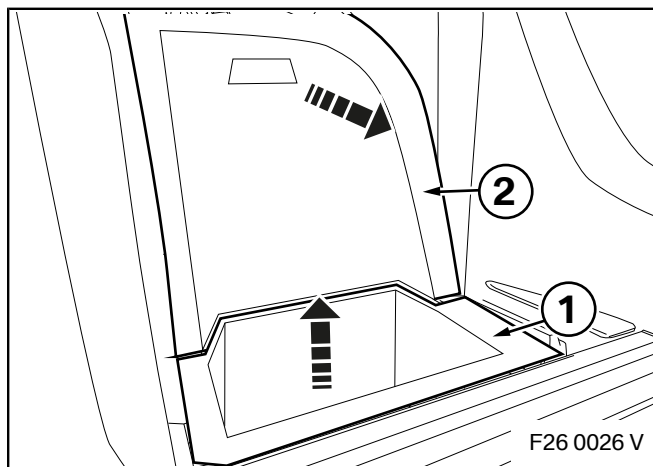
Legend

- A** Tailgate silencer
- B** Heat insulation
- C** Rear silencer bracket
- D** Clamp
- E** Nut (2 x)
- F** Tailgate silencer receiver unit
- G** Tailgate silencer wiring harness
- H** Cable ties (8 x)
- I** Cable tie with holding stops (2 x)
- J** Mini fuse 3A (2 x)
- K** Tailgate silencer remote control (including packaging)
- L** Cable tie for edge
- M** Left finisher
- N** Right finisher
- O** Sheet metal screw (4 x)
- P** Left template
- Q** Right template
- R** Primer (included in the Betalink parts kit)
- S** Betalink (not supplied)

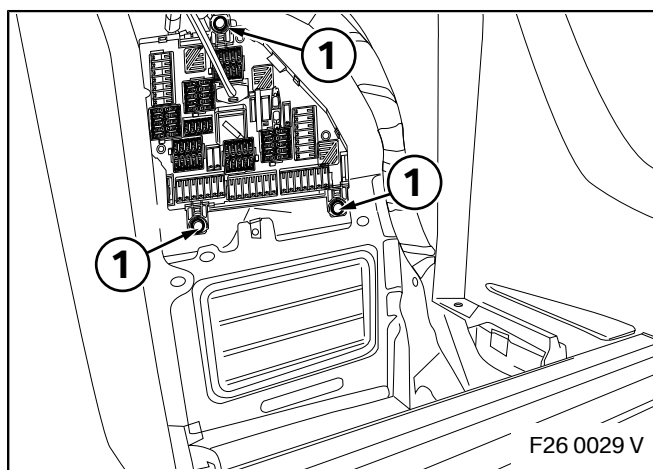
2. Preparatory work

	ISTA No.
disconnect the negative pole of the battery	12 00 ...
The following components must be removed first of all	
Luggage compartment wheel arch trim, right	51 47 161
Luggage compartment floor trim	51 47 101
Entire exhaust system	18 00 018

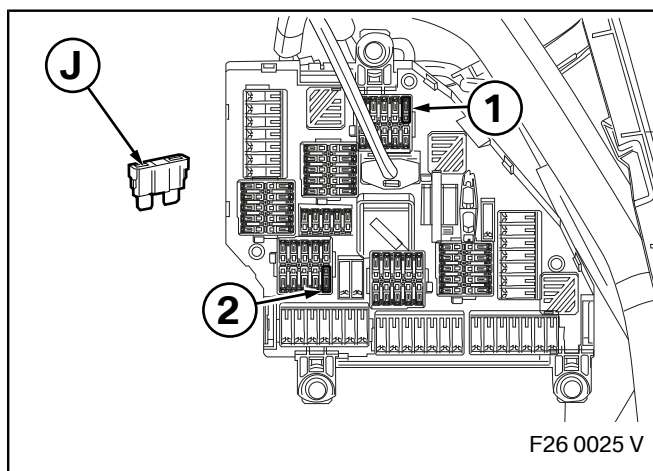
3. Installing the tailgate silencer system



Remove the rear right storage compartment (1) and rear right side trim (2) in the luggage compartment.

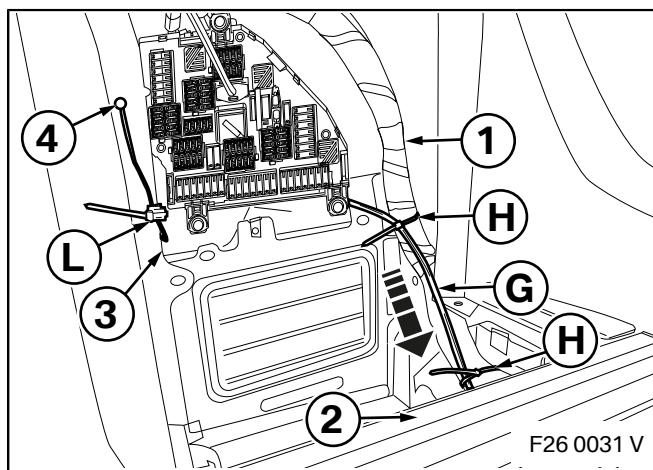


Remove the screws (1).



Connect the green cable from tailgate silencer wiring harness **G** to the plug of fuse **F131**. Connect the red cable from tailgate silencer wiring harness **G** to the plug of fuse **F143**.

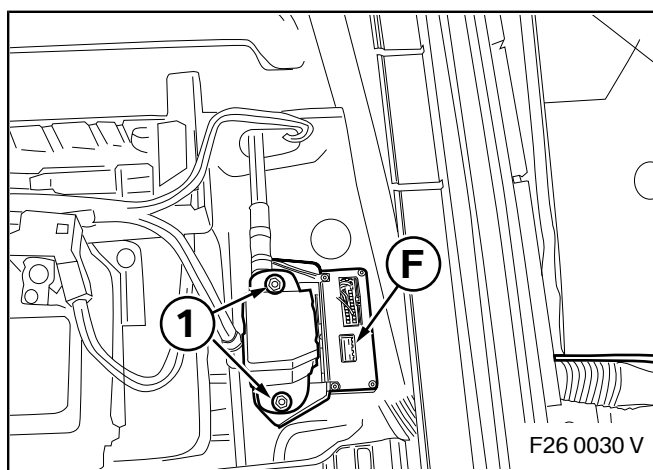
Insert mini fuse 3A **J** into fuse holder (1) and (2).



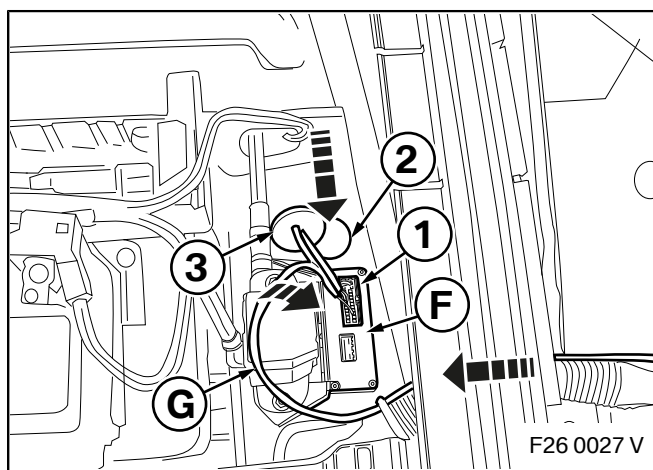
Route tailgate silencer wiring harness **G** downwards and tie it at a suitable point using cable ties **H** to the large wiring harness (1) and route this below the rail (2) into the luggage compartment.

Connect the black earth cable from tailgate silencer wiring harness **G** using cable ties for edge **L** to the edge (3) and to the earth point (4) of the car and screw it into place.

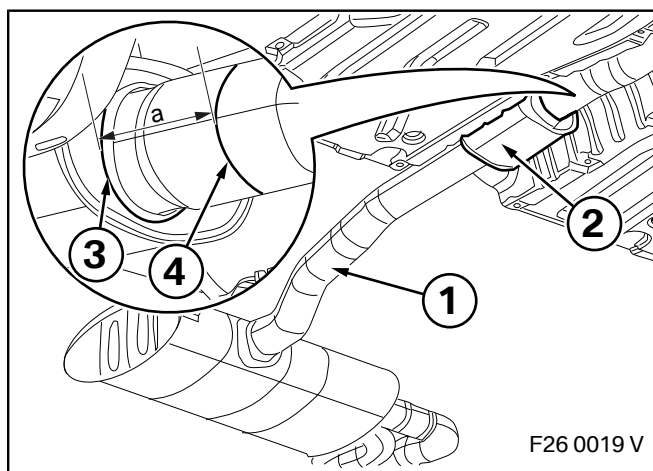
3. Installing the tailgate silencer system



Release the two nuts (1) from the handover support point and affix tailgate silencer receiver unit **F** underneath, then secure the handover support point again using the two nuts (1).

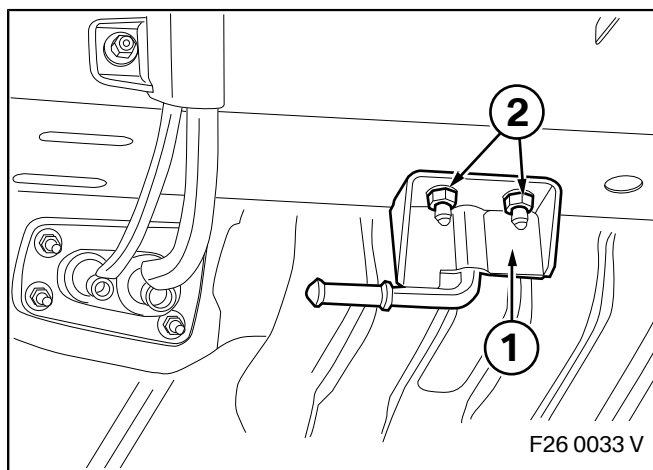


Insert the plug of tailgate silencer wiring harness **G** into the large socket (1) of tailgate silencer receiver unit **F**. Push the rest of the cable through the opening in the floor (2) and push the stops (3) into place.



With the existing exhaust system (1), measure a length of **a = 43 mm** in front of the housing for the middle silencer (2) from the wall (3) and transfer a line (4) using suitable tools.

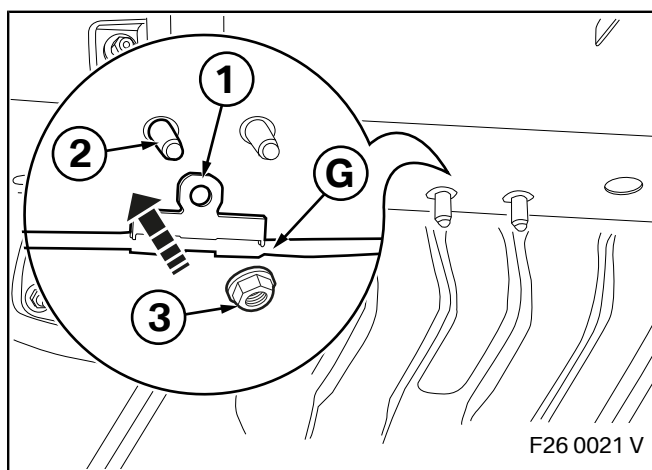
Then separate the exhaust system at line (4) using suitable tools, deburr the edges and protect them from corrosion.



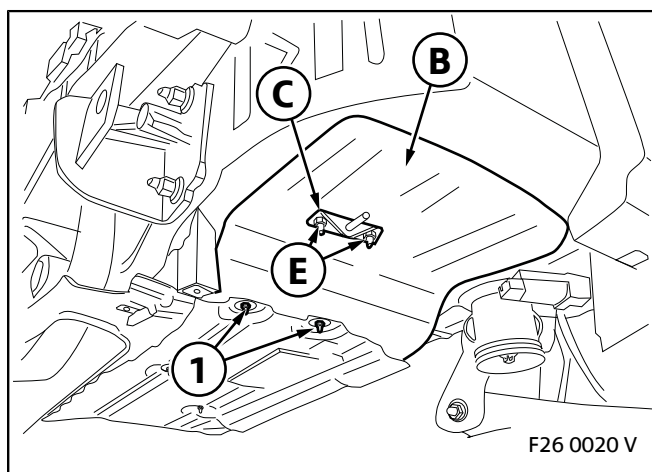
Remove the two nuts (1) from the rear silencer mounting (2).

- ▢ Keep one nut (1) as it will be required later.
- The rear silencer mounting (2) is no longer required. ◀

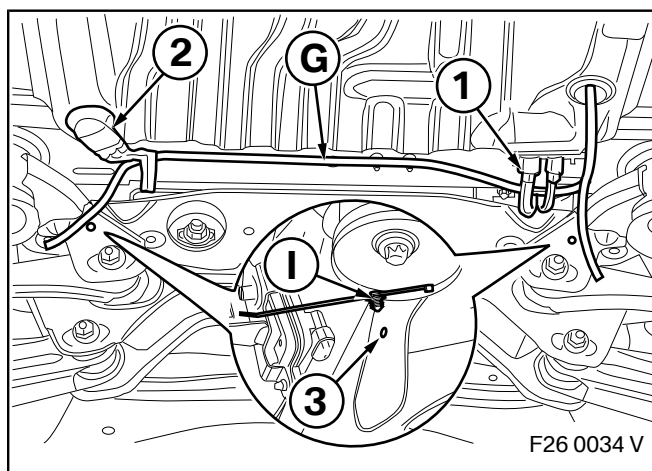
3. Installing the tailgate silencer system



Place the fastening (1) of tailgate silencer wiring harness **G** on the stud bolts (2) and screw into place using the existing nuts (3).

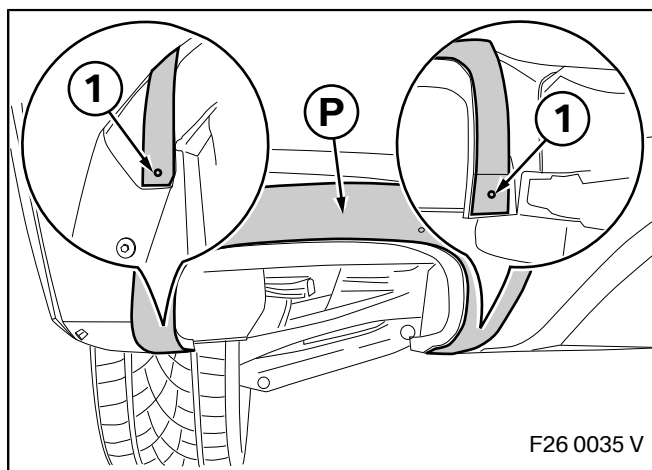


Remove the two nuts (1) from the heat insulation. Push heat insulation **B** in and re-tighten the nuts (1). Secure rear silencer holder **C** using both nuts **E**.



Route tailgate silencer wiring harness **G** below the cable (1) and (2) on the left-hand side and secure with cable tie **H**.

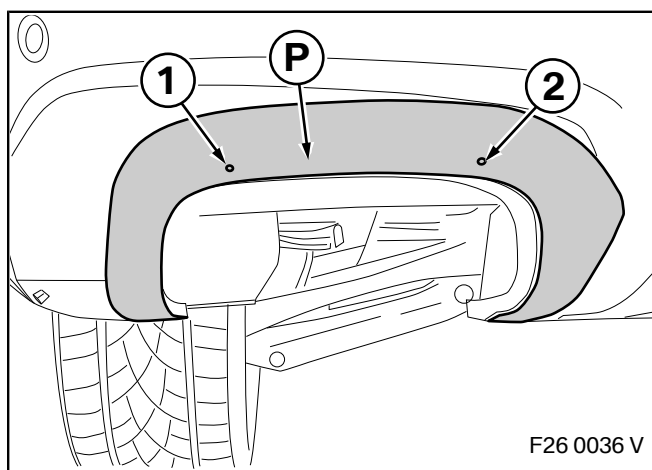
Insert cable ties with holding stops **I** into the existing holes (3).



 The areas being bonded must be completely dry, clean and free from wax or grease. ◀

Align template **P** with the two holes (1) and push upwards onto the rear apron.

3. Installing the tailgate silencer system

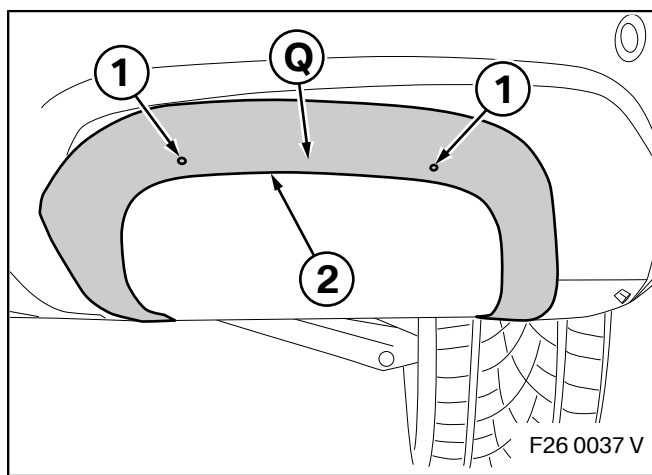


On the right-hand side of the car:

▶ Ensure adequate clearance when drilling. ◀

Drill two holes (1) with diameter = **4 mm** into the rear apron and deburr them.

Remove template **P**.

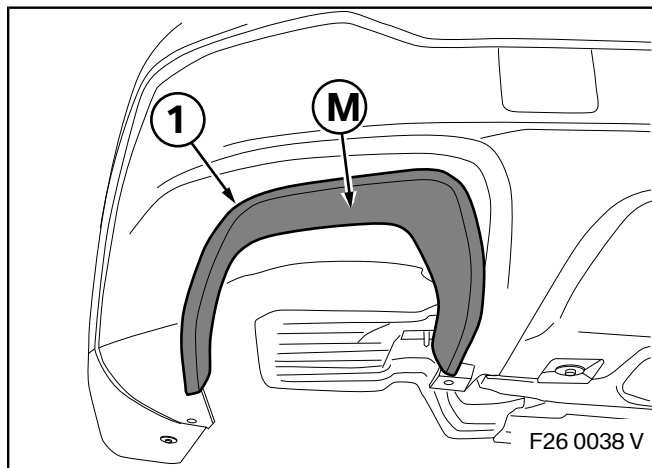


On the left-hand side of the car:

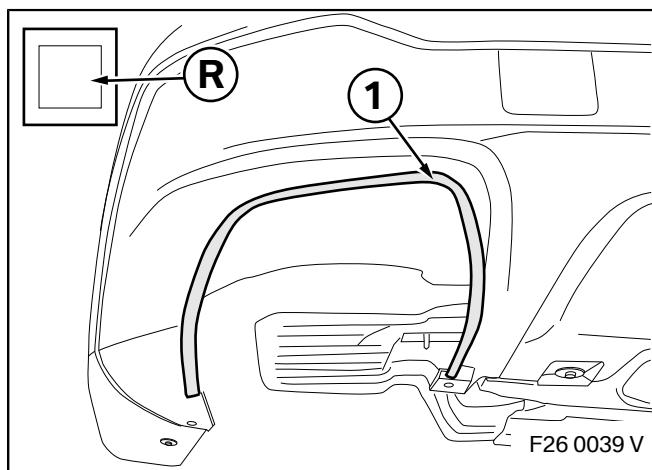
▶ Ensure adequate clearance when drilling and cutting. ◀

Drill two holes (1) with diameter = **4 mm** and deburr them. Also cut the rear apron at the contour (2) using a suitable tool.

Remove template **Q**.



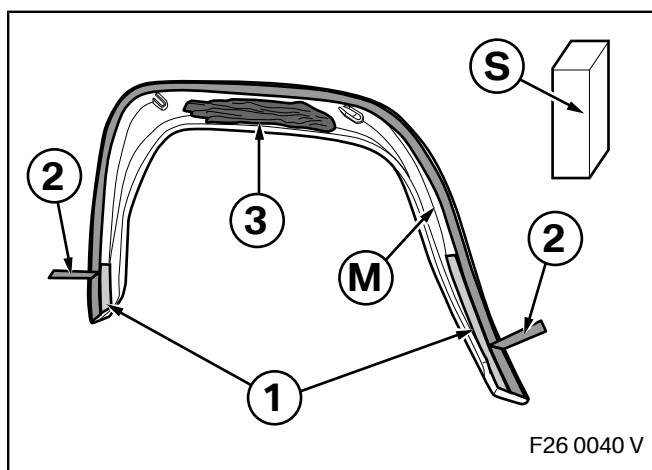
Attach finisher **M** and transfer the rear contour (1) to the rear apron using a suitable tool. Remove finisher **M**.



Prime the surface inside the contour (1) using primer **R**.

▶ Note the ventilation time of **5 minutes**. ◀

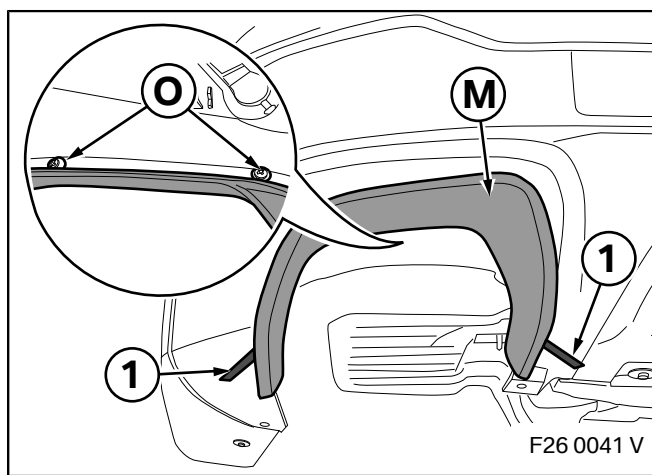
3. Installing the tailgate silencer system



☐ The areas being bonded must be completely dry, clean and free from wax or grease. ◀

Completely remove the protective film from the short adhesive strips (1). Pull back the two ends of the protective film (2) on the outer adhesive strip far enough so that small tabs form.

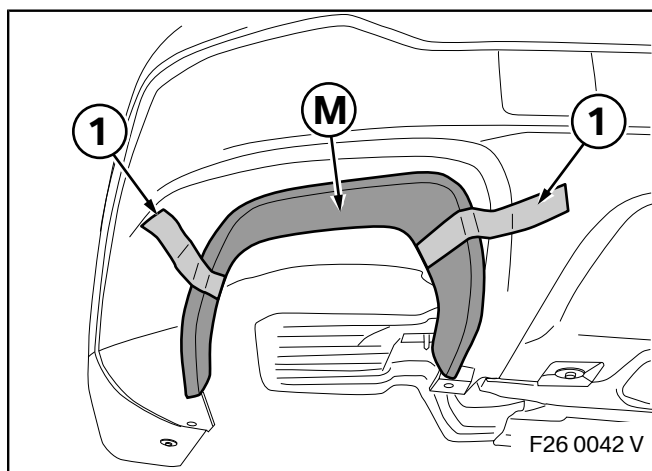
Generously apply Betalink **S** between the two screw points as shown (3).



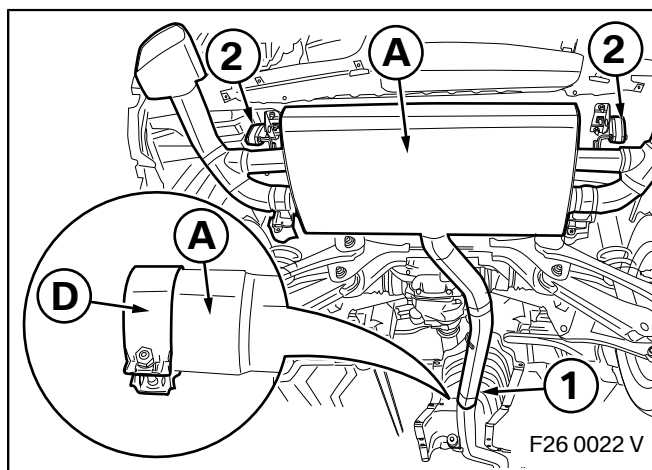
☐ Ensure that all tabs on the adhesive backing film are visible. ◀

Position finisher **M** and push it firmly on. Remove backing film (1). From inside, tighten two sheet metal screws **O**. Firmly and repeatedly press on finisher **M** in the area of the adhesive strips.

☐ Remove any Betalink that oozes out immediately. ◀



Secure finisher **M** with suitable adhesive tape (1) and do not remove for **around 24 hours**.

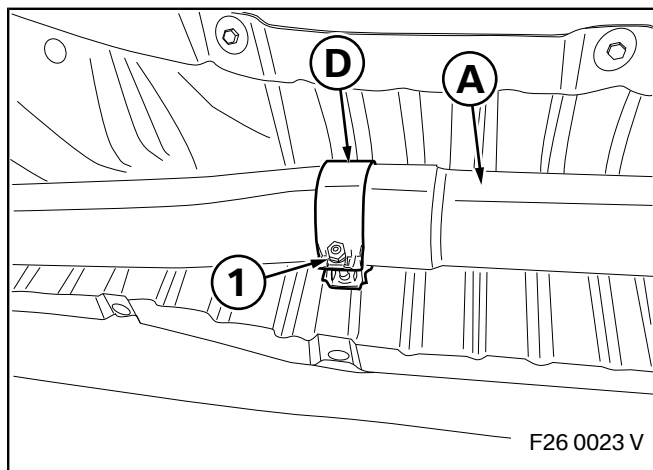


Place clamp **D** on the pipe of tailgate silencer **A**.

Insert tailgate silencer **A** into the pipe (1). Hang tailgate silencer **A** using the existing rubber mountings (2).

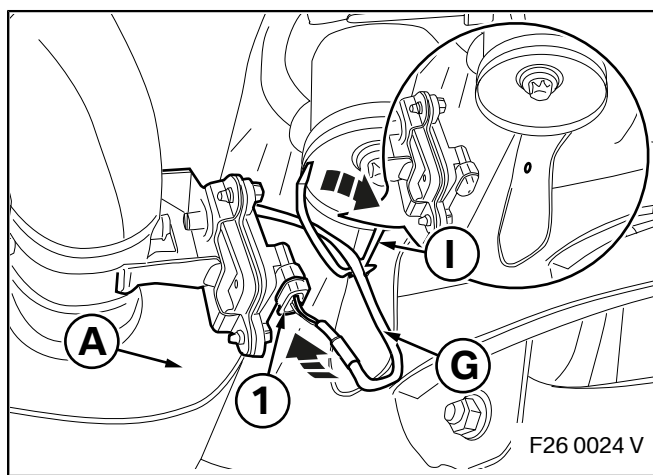
Push tailgate silencer **A** forwards towards the front of the car.

3. Installing the tailgate silencer system



Align clamp **D** so that the screw (1) points downwards. ◀

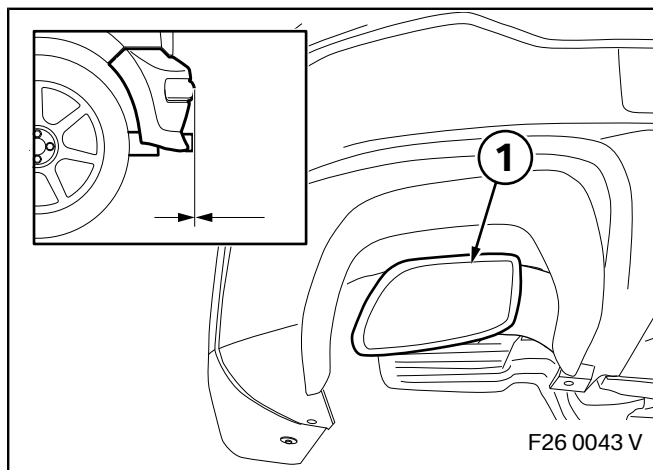
Using clamp **D**, tighten the pipe of tailgate silencer **A** to **28 Nm**.



Insert the plug (1) from tailgate silencer wiring harness **G** into the socket of the tailgate switch of tailgate silencer **A**.

Then secure tailgate silencer wiring harness **G** using cable tie with holding stops **I**.

4. Concluding work and coding



- The exhaust pipe finishers (1) must be aligned centred and parallel and must not extend beyond the bodywork parts situated above them. ◀

- This retrofit does not require coding
- Re-assemble the car
- Conduct a brief test

5. Workshop certificate



Workshop certificate M Performance tailgate silencer system

This is to confirm that the M Performance tailgate silencer system has been fully installed on the vehicle below.
No additional components have been converted or retrofitted.

Part number

18 30 2 359 003

M Performance Tailgate Silencer System

F26

The vehicle type approval becomes invalid if used on public roads!

Car model:

Vehicle identification no.:

Name and address of the vehicle owner:

Place, date

Signature of person responsible

Dealership (company name / stamp)